

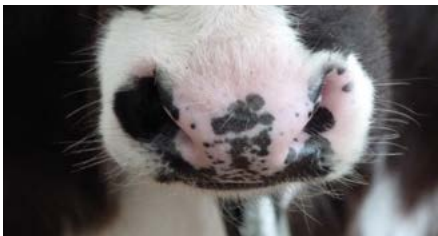
# Calf health scorecard

Implement the treatment protocol agreed with your vet for calves with early and late signs of disease.

RESPIRATORY

## Signs of good health and vigour

- Bright • Playful • Curious
- Keen to drink milk



- Clear eyes and nose
- No cough

Normal temperature  
(38–39°C or 100–102°F)

## Look for early signs of disease

- Quiet • Slow to stand
- Still drinking milk



- Discharge from eyes and nose
- Cough on movement

High temperature  
(>39.5°C or 103°F)

## Late signs of disease

- Dull
- Reluctant to stand unaided
- Off milk



- Severe discharge with pus
- Frequent coughing/wheezing

High temperature  
(>39.5°C or 103° F)

SCOURS



- Clean hindquarters
- Well formed faeces

Normal temperature  
(38–39 °C or 100–102 °F)



- Dirty hindquarters
- Loose faeces

Variable temperature



- Wet hindquarters • Hair loss
- Dehydrated • Watery faeces

Variable temperature

**ACT NOW**

Early detection means prompt treatment

## Why use this scorecard?

Early detection of disease and immediate effective treatment in calves is vital as:

- Calves will spend less time ill, thereby improving their welfare
- It saves time that would have been spent caring for sick calves
- It improves growth rates
- It reduces antibiotic use by reducing the need for repeat treatments

## When should I use this scorecard?

Use this scorecard daily as part of your routine calf checks. It's also a useful tool to train new calf rearers.

## How to use this scorecard?

Use the photos to check each calf for signs of disease and categorise them into good health, or with early or late signs of disease.

Calves with early and late signs of disease should receive treatment as soon as possible.

Calves that have no suck reflex or can't stand unaided require immediate veterinary attention.

We have included boxes to record treatment protocols for each condition for calves with early and late signs of disease. You should agree these treatment plans with your vet.

Don't forget to record any medicines used in your medicine book. Recording a detailed reason for use will help both you and your vet identify where any problems may lie.

### Pneumonia treatment protocol

Early sign of disease

Late signs of disease

### Scours treatment protocol

Early sign of disease

Late signs of disease

Vets phone number

## AHDB

Middlemarch Business Park, Siskin Parkway East, Coventry CV3 4PE  
T: 024 7669 2051 E: [comms@ahdb.org.uk](mailto:comms@ahdb.org.uk) W: [ahdb.org.uk](http://ahdb.org.uk)

If you no longer wish to receive this information, please email us on [comms@ahdb.org.uk](mailto:comms@ahdb.org.uk)